

A photograph of a family of four sitting on the grass. A woman with long dark hair and glasses is in the center, holding an open book. To her left, a young boy in a yellow shirt is looking at the book. To her right, a man is looking down at a book held by a baby. The scene is outdoors with a blurred background of green grass and trees. The text "40 YEARS" is overlaid in large orange letters, and "CREATING A POSITIVE FUTURE FOR ARIZONA'S CHILDREN" is overlaid in white letters below it.

40 YEARS

CREATING A POSITIVE FUTURE FOR
ARIZONA'S CHILDREN

ANNUAL REPORT
FISCAL YEAR 2021



ABOUT US

OUR MISSION

Southwest Human Development strengthens the foundation Arizona's children need for a great start in life.

OUR VISION

A positive future for every child.

OUR PROGRAMS

At Southwest Human Development, our early childhood professionals invest their time in research-driven programs to benefit young children and their families.

We understand that a child's earliest experiences and relationships establish the foundation for all future development – intellectual, social, emotional, physical, and behavioral. That's why we work to prepare the whole child through more than 40 programs in the following areas:

- Child Development
- Mental Health Services
- Easterseals Disabilities Services
- Early Literacy
- Early Head Start and Head Start
- Family Support and Child Welfare
- Professional Development and Training

WHY IT'S IMPORTANT

Early experiences matter.

Science has shown that our earliest days, weeks, months, and years are a period of critical growth and development. At birth, children have cognitive, social, and emotional potential that reflects a combination of genetic and environmental influences. As children, our health and development are directly influenced by the quality of care and experiences we have with parents and other adults. How we are cared for teaches us about who we are and how we are valued. This profoundly shapes who we will become.

The investments we make today in young children advance the health, well-being, and development of our community. At Southwest Human Development, our services improve lives and help families by supporting young children and their families during this critical time.

DEAR FRIENDS:



In 1981, Southwest Human Development started with a single program serving young children with disabilities. This year, our organization marked 40 years as a leader in early childhood development, serving more than 140,000 children and their families.

During our first 40 years, Southwest Human Development successfully provided Arizona families with the care, attention, and support needed to help their children achieve their fullest potential. We are proud of our longstanding history of identifying critical gaps in services for young children and families, and we work hard to ensure children and families have equitable access to high-quality programs and services. Looking to the future, we remain committed to strengthening the foundation Arizona's children need for a great start in life.

The investments we make today in young children provide the important foundation for their future development and success in life. The support we receive from our community is critical to our continued impact. We are incredibly appreciative to all of our partners and donors for their support and their commitment to Arizona's young children and families.

Thank you for being part of Southwest Human Development's 40 years of impact.

Sincerely,



Julie Shaw
Board Chair

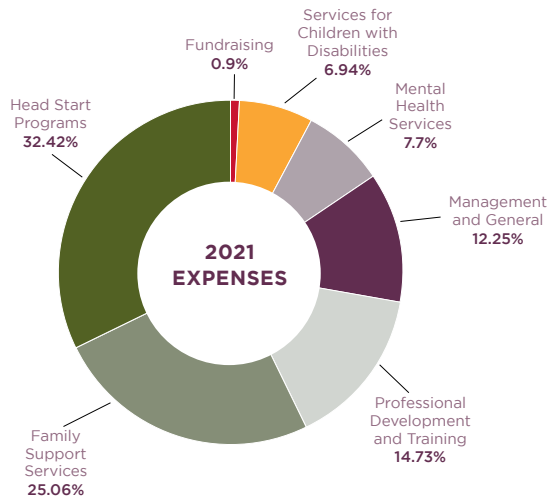
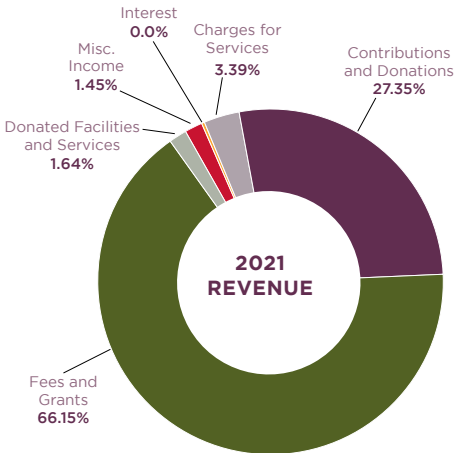


Ginger Ward
CEO

FY 2021 AUDITED FINANCIALS

REVENUE AND SUPPORT

	Totals
Fees and Grants from Governments	\$ 59,103,149
Charges for Services	3,031,397
Contributions and Donations	24,439,149
Donated Facilities	1,466,464
Interest	2,453
Miscellaneous Income	229,676
Change in Estimate-Reserve of Self Insured Health Benefits	1,069,153
Total Revenue and Support	\$ 89,341,441



EXPENSES

PROGRAM SERVICES

Head Start and Professional Development Institute	21,397,928
Family Support Services	16,536,769
Services for Children with Disabilities	4,582,962
Mental Health Services	5,079,399
Professional Development and Training	9,720,287

SUPPORTING SERVICES

Management and General	8,085,131
Fundraising	592,892
Total Expenses	\$ 65,995,368

**FOUNDED
IN 1981**



TODAY

\$150,000

Budget



\$76 MILLION

FY 2022 Annual Budget

Serving

175

Children and
Families



Serving

140,000

Children, Families,
and Professionals

6

Staff
Members



849

Staff
Members

1

Head Start
Disabilities
Program



40

Programs
and Services

**THE FIRST
2,000
DAYS**

of a child's life between birth and kindergarten **are critical to development** and their chances of lifelong health and well-being.

DONORS

Alaska USA Foundation
Albertsons Foundation and Safeway Foundation
Alliance Bank of Arizona
Amazon
American Family Insurance
American Furniture Warehouse
Andersen Corporate Foundation
Arizona Association of Defense Counsel
Arizona Child Abuse Prevention & Advocacy License Plate Grant Program
Arizona Community Foundation
Arizona Coronavirus Relief Fund
Arizona Coyotes Foundation
Arizona Governor's Office for Youth, Faith and Family
BBVA Foundation
BHHS Legacy Foundation
Blue Cross Blue Shield of Arizona
BMO Harris Bank
BOKF Foundation
Buffett Early Childhood Fund
Buuck Family Foundation
Cardinals Charities
CENTURY 21 Arizona Foothills
Christopher & Dana Reeve Foundation
City of Avondale
Comerica Bank
Consumer Cellular
CopperPoint Insurance Companies
Delta Dental of Arizona Foundation
Dignity Health / St. Joseph's Hospital & Medical Center
Easterseals
Executive Council Charities
Fidelity Charitable Gift Fund
Fiesta Bowl Charities
FineMark National Bank & Trust
General Motors
HM Life Insurance Co.
Homesite Insurance
Ibis Foundation of Arizona

In-N-Out Burger Foundation
JFQ Lending
John F. Long Foundation
Lockton Companies
Kemper & Ethel Marley Foundation
Mortenson
Mountain America Credit Union
National Bank of Arizona Foundation
Nina Mason Pulliam Charitable Trust
ON Semiconductor
Paloma Ready Mix & Materials
William L. and Ruth T. Pendleton Memorial Fund
Performance Contracting
Phoenix Suns Charities
PNC Foundation
Quicken Loans
RBC Foundation
Salt River Pima-Maricopa Indian Community
Seattle Foundation
Simone Charitable Foundation, Inc.
Stranahan Foundation
Subway Kids & Sports of Arizona
Sunflower Bank
The Arizona Republic/Season for Sharing Campaign
The Board of Visitors
The Employees Community Fund of Boeing Arizona
The Irving Harris Foundation
The Klingler Group LLC
The NARBHA Institute
The Steele Foundation
The Steve Nash Foundation
The Surplus Line Association of Arizona Foundation
Thunderbirds Charities
UBS
Valley of the Sun United Way
Vanguard Charitable
Virginia G. Piper Charitable Trust
Vitalyst Health Foundation
Wells Fargo Securities